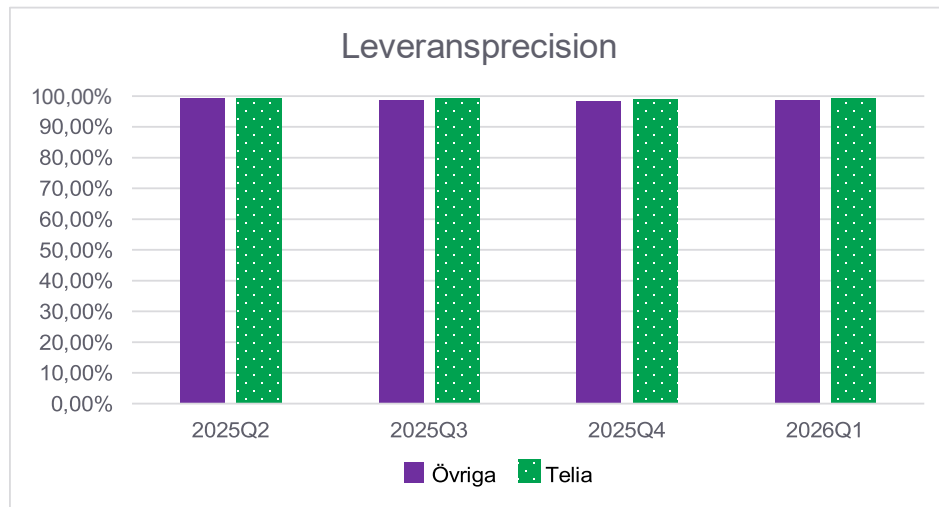


## Fiber Villa Leveransprecision, kundklara order

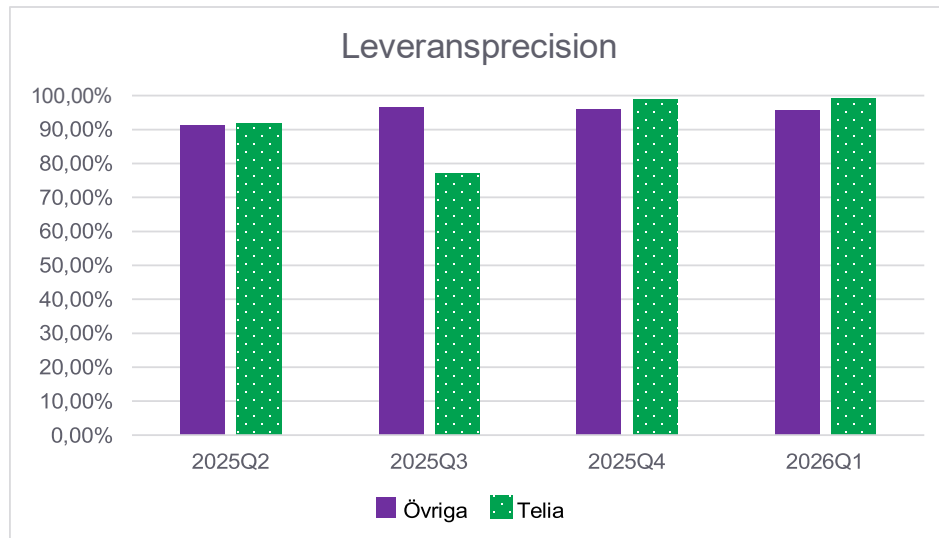
### Operatörsbyte



Kvartal	Övriga grossistkunder	Telia	Summa
2025Q2	99,34%	99,13%	99,23%
2025Q3	98,78%	99,13%	98,96%
2025Q4	98,44%	98,97%	98,70%
2026Q1	98,77%	99,13%	98,95%

## Fiber Villa Leveransprecision, kundklara order

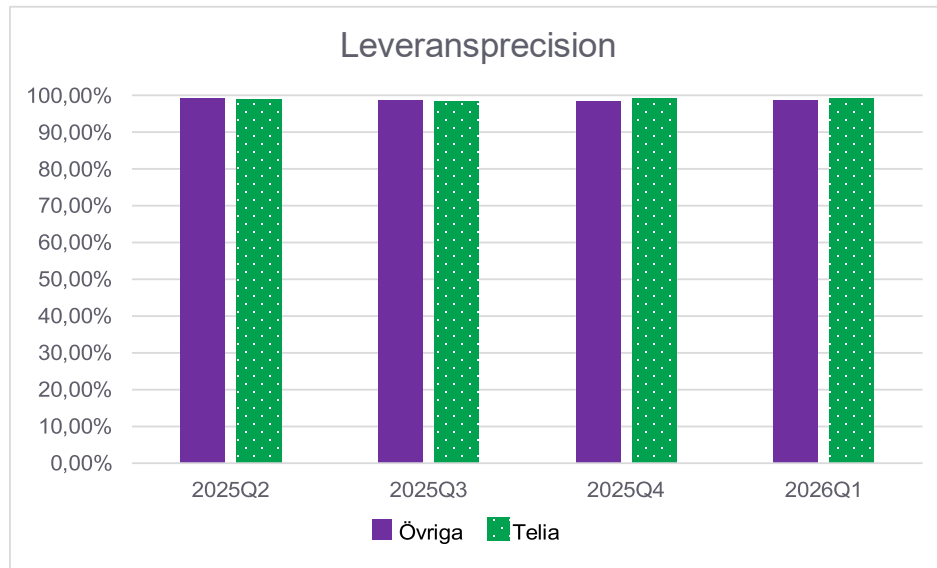
### Uppsättning



Kvartal	Övriga grossistkunder	Telia	Summa
2025Q2	91,11%	91,67%	91,39%
2025Q3	96,55%	76,92%	87,85%
2025Q4	96,00%	98,85%	97,45%
2026Q1	95,65%	99,28%	97,50%

## Fiber Villa Leveransprecision, Ny + Opbyte, kundklara order

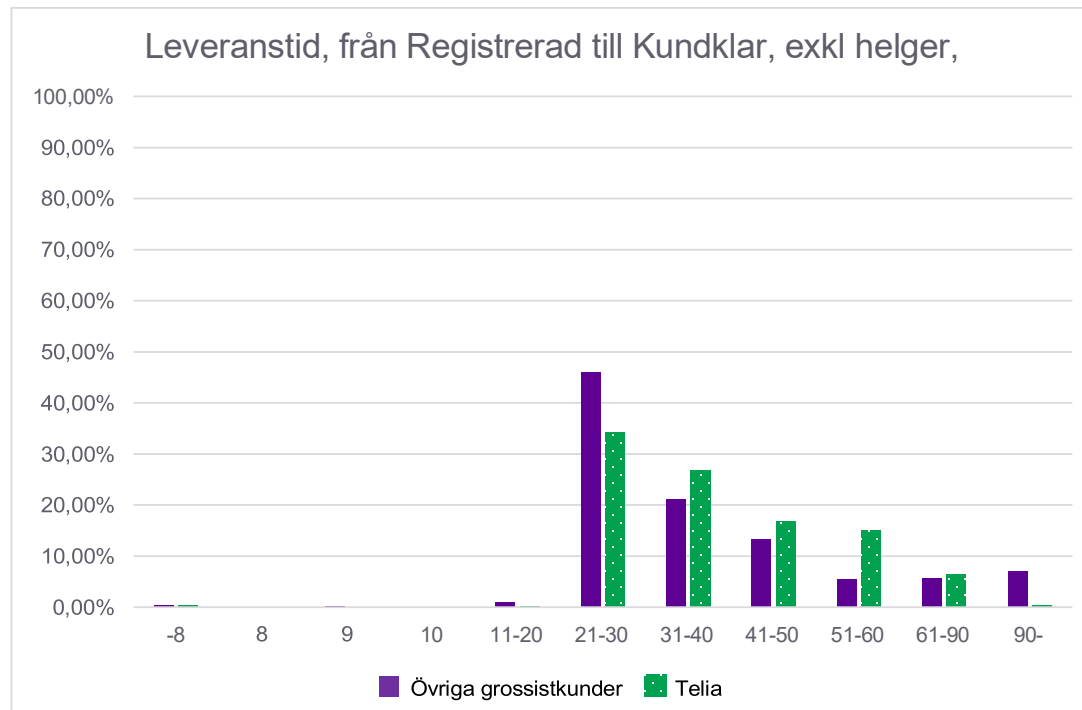
### Operatörsbyte



Kvartal	Övriga grossistkunder	Telia	Summa
2025Q2	99,27%	98,79%	99,03%
2025Q3	98,75%	98,42%	98,59%
2025Q4	98,39%	99,03%	98,71%
2026Q1	98,74%	99,15%	98,95%

## Fiber Villa leverans ledtid exkl. helger, kundklara order under period: 2026Q1

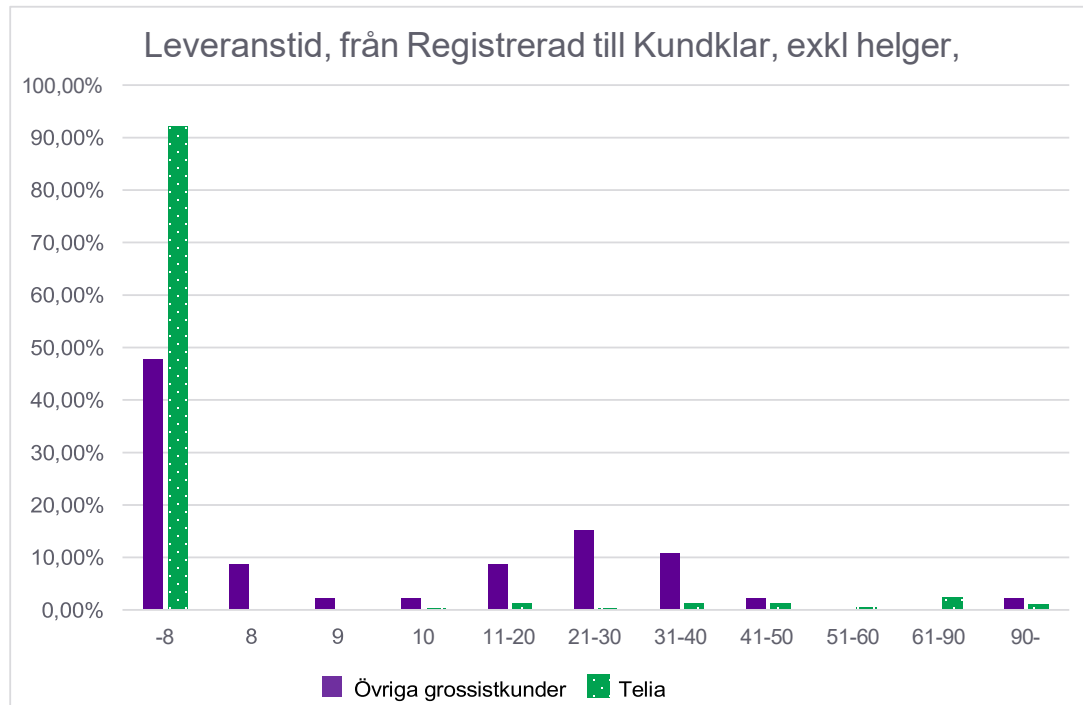
### Operatörsbyte



	Övriga grossistkunder	Telia
-8	0,40%	0,38%
8	0,09%	
9	0,12%	
10	0,09%	
11-20	0,96%	0,21%
21-30	46,07%	34,17%
31-40	21,11%	26,83%
41-50	13,23%	16,72%
51-60	5,37%	14,95%
61-90	5,64%	6,36%
90-	6,93%	0,38%

## Fiber Villa leverans ledtid exkl. helger, kundklara order under period: 2026Q1

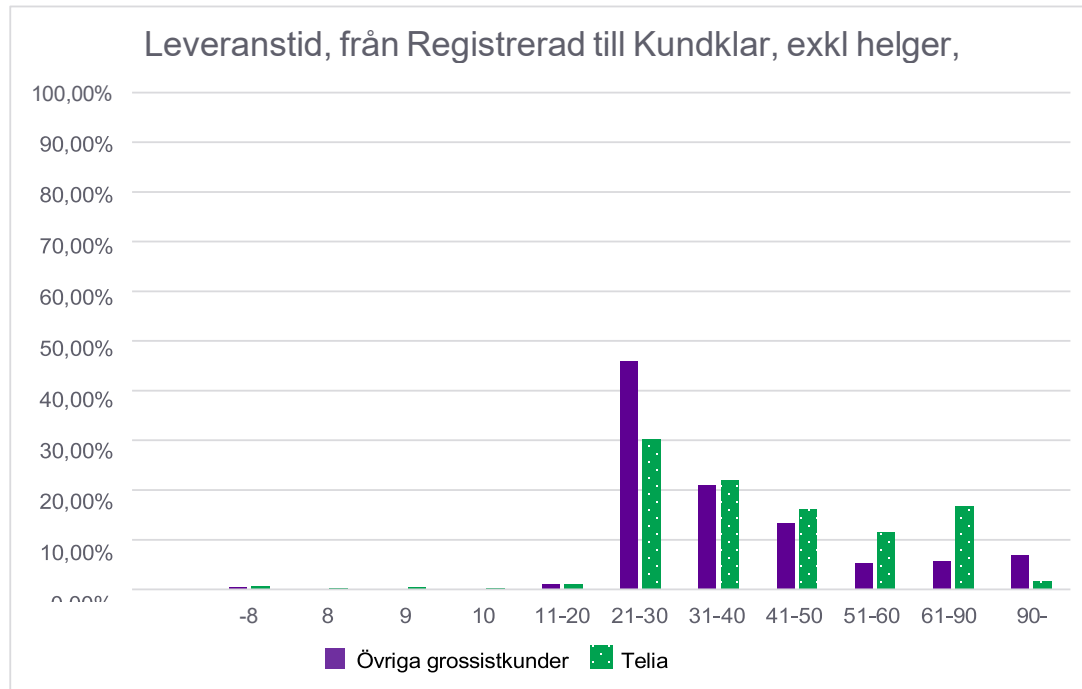
### Uppsättning



	Övriga grossistkunder	Telia
-8	47,83%	92,11%
8	8,70%	
9	2,17%	
10	2,17%	0,24%
11-20	8,70%	1,20%
21-30	15,22%	0,24%
31-40	10,87%	1,20%
41-50	2,17%	1,20%
51-60		0,48%
61-90		2,39%
90-	2,17%	0,96%

## Fiber Villa leverans ledtid exkl. helger, kundklara order under period: 2025Q4

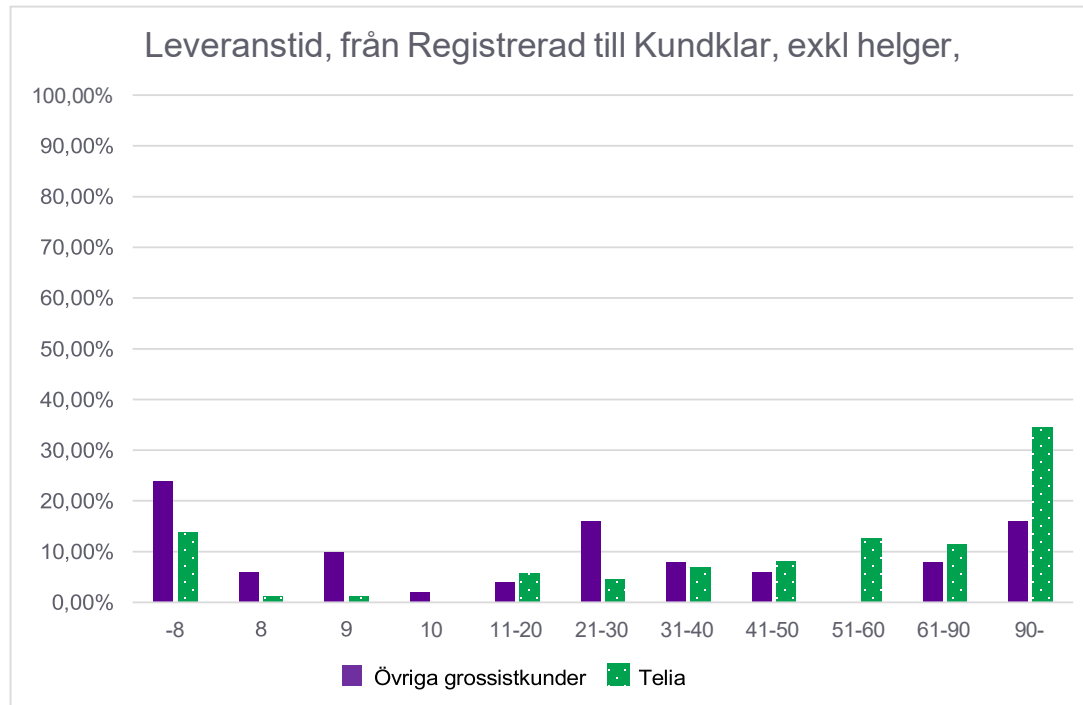
### Operatörsbyte



	Övriga grossistkunder	Telia
-8	0,40%	0,61%
8	0,09%	0,23%
9	0,12%	0,28%
10	0,09%	0,09%
11-20	0,96%	1,03%
21-30	46,07%	30,15%
31-40	21,11%	21,99%
41-50	13,23%	16,13%
51-60	5,37%	11,39%
61-90	5,64%	16,60%
90-	6,93%	1,50%

## Fiber Villa leverans ledtid exkl. helger, kundklara order under period: 2025Q4

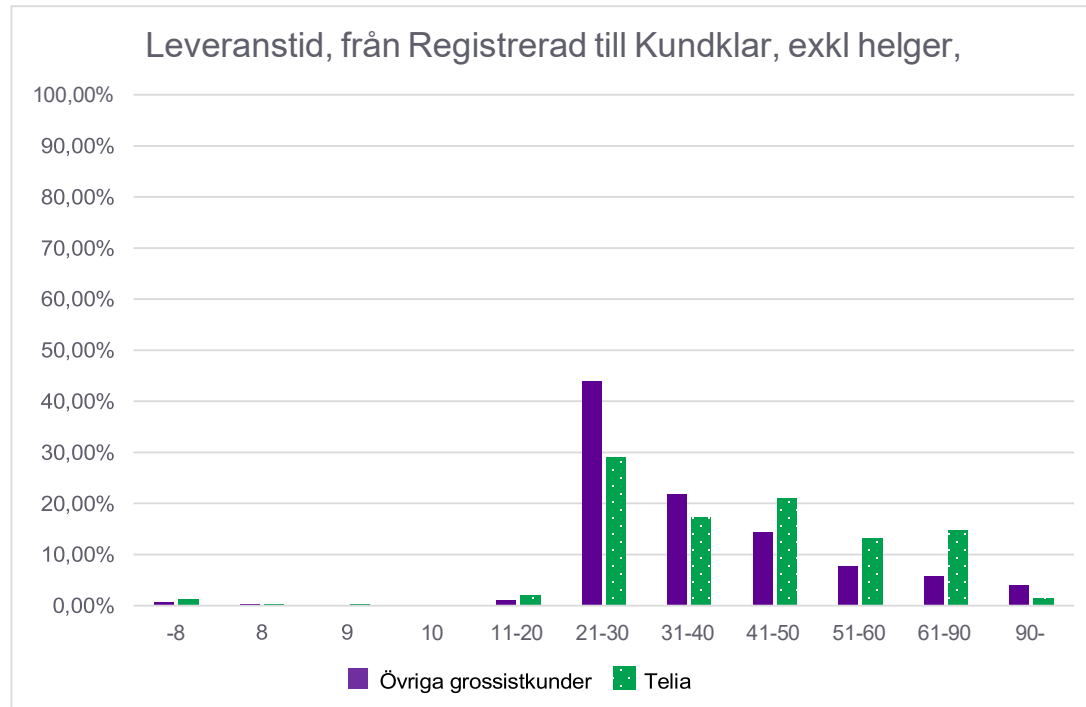
### Uppsättning



	Övriga grossistkunder	Telia
-8	24,00%	13,79%
8	6,00%	1,15%
9	10,00%	1,15%
10	2,00%	0,00%
11-20	4,00%	5,75%
21-30	16,00%	4,60%
31-40	8,00%	6,90%
41-50	6,00%	8,05%
51-60	0,00%	12,64%
61-90	8,00%	11,49%
90-	16,00%	34,48%

## Fiber Villa leverans ledtid exkl. helger, kundklara order under period: 2025Q3

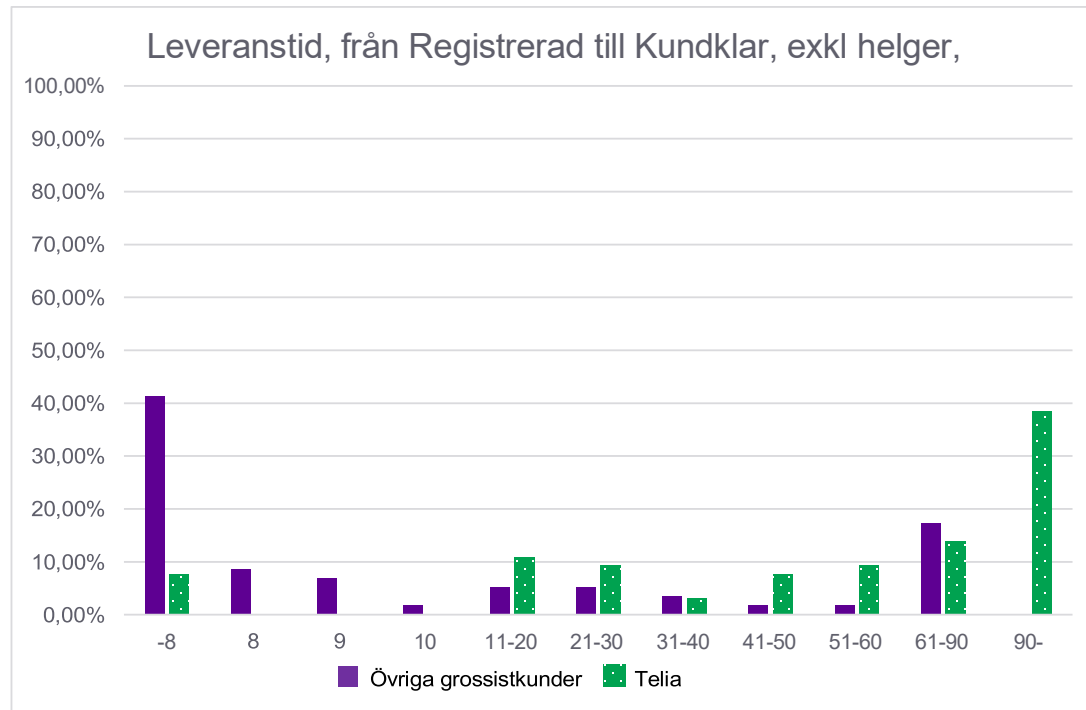
### Operatörsbyte



	Övriga grossistkunder	Telia
-8	0,74%	1,23%
8	0,19%	0,26%
9	0,04%	0,20%
10	0,04%	0,05%
11-20	1,18%	1,94%
21-30	44,00%	29,08%
31-40	21,94%	17,17%
41-50	14,40%	20,95%
51-60	7,68%	13,03%
61-90	5,74%	14,77%
90-	4,05%	1,33%

## Fiber Villa leverans ledtid exkl. helger, kundklara order under period: 2025Q3

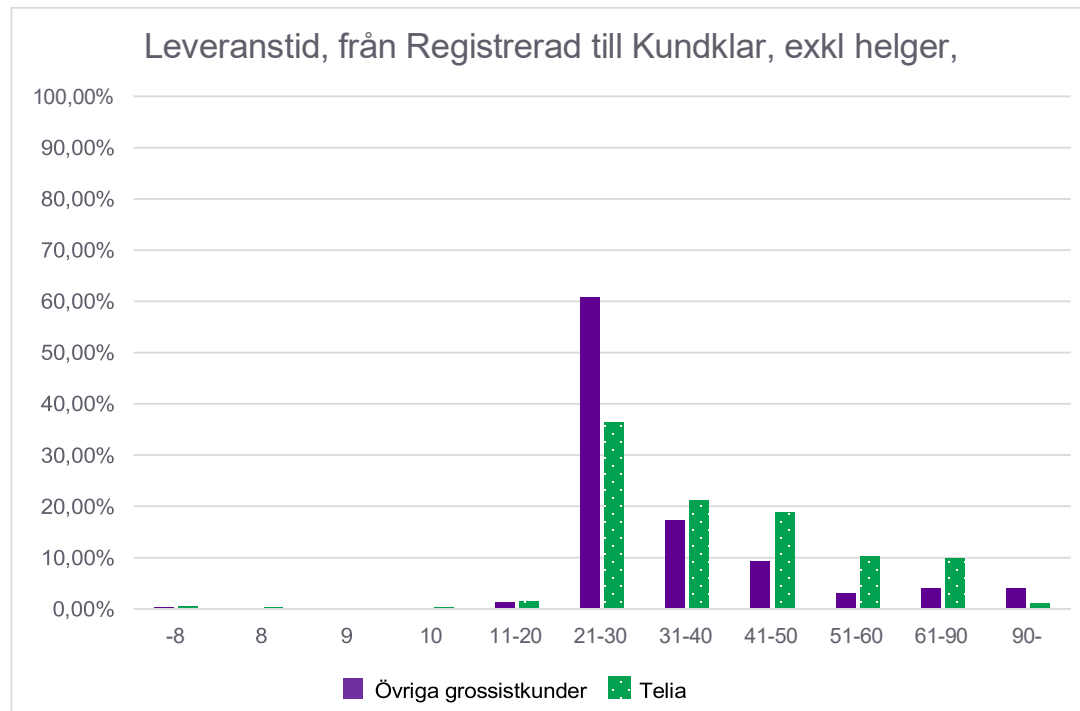
### Uppsättning



	Övriga grossistkunder	Telia
-8	41,38%	7,69%
8	8,62%	
9	6,90%	
10	1,72%	
11-20	5,17%	10,77%
21-30	5,17%	9,23%
31-40	3,45%	3,08%
41-50	1,72%	7,69%
51-60	1,72%	9,23%
61-90	17,24%	13,85%
90-		38,46%

## Fiber Villa leverans ledtid exkl. helger, kundklara order under period: 2025Q2

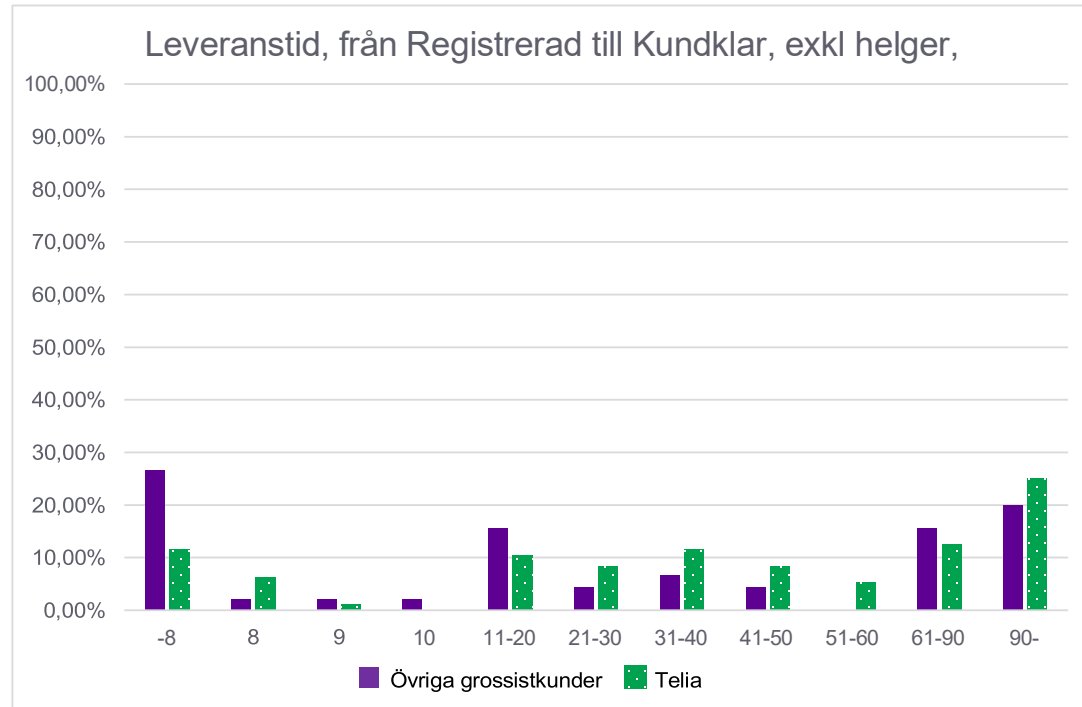
### Operatörsbyte



	Övriga grossistkunder	Telia
-8	0,31%	0,44%
8	0,11%	0,34%
9	0,04%	0,15%
10	0,18%	0,19%
11-20	1,23%	1,55%
21-30	60,70%	36,36%
31-40	17,32%	21,07%
41-50	9,26%	18,88%
51-60	2,97%	10,19%
61-90	3,94%	9,81%
90-	3,94%	1,02%

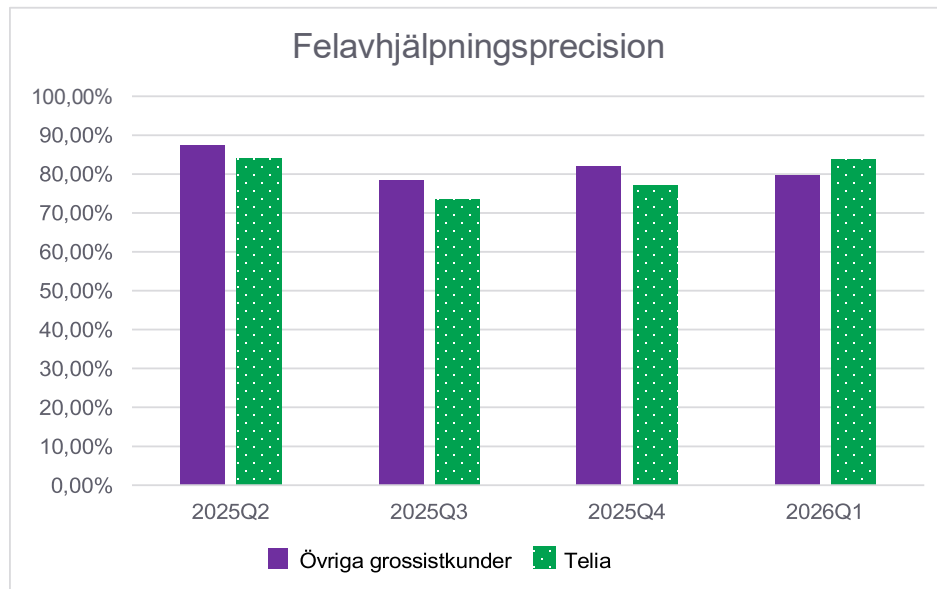
## Fiber Villa leverans ledtid exkl. helger, kundklara order under period: 2025Q2

### Uppsättning



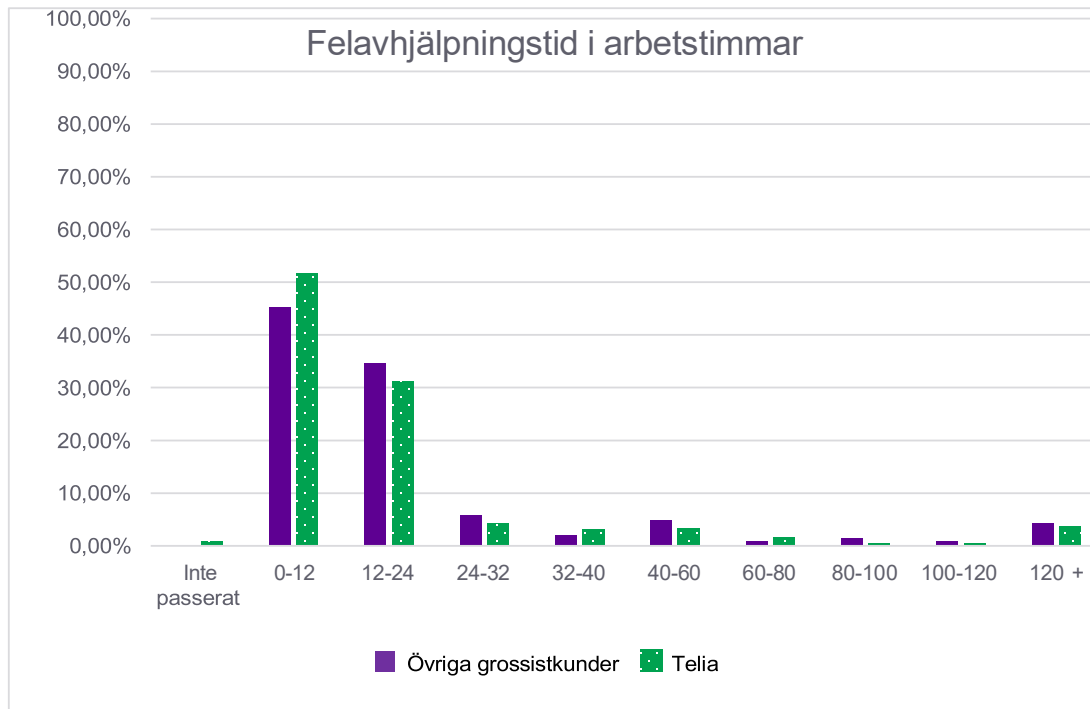
	Övriga grossistkunder	Telia
-8	26,67%	11,46%
8	2,22%	6,25%
9	2,22%	1,04%
10	2,22%	0,00%
11-20	15,56%	10,42%
21-30	4,44%	8,33%
31-40	6,67%	11,46%
41-50	4,44%	8,33%
51-60	0,00%	5,21%
61-90	15,56%	12,50%
90-	20,00%	25,00%

## Fiber Villa Felavhjälpningsprecision



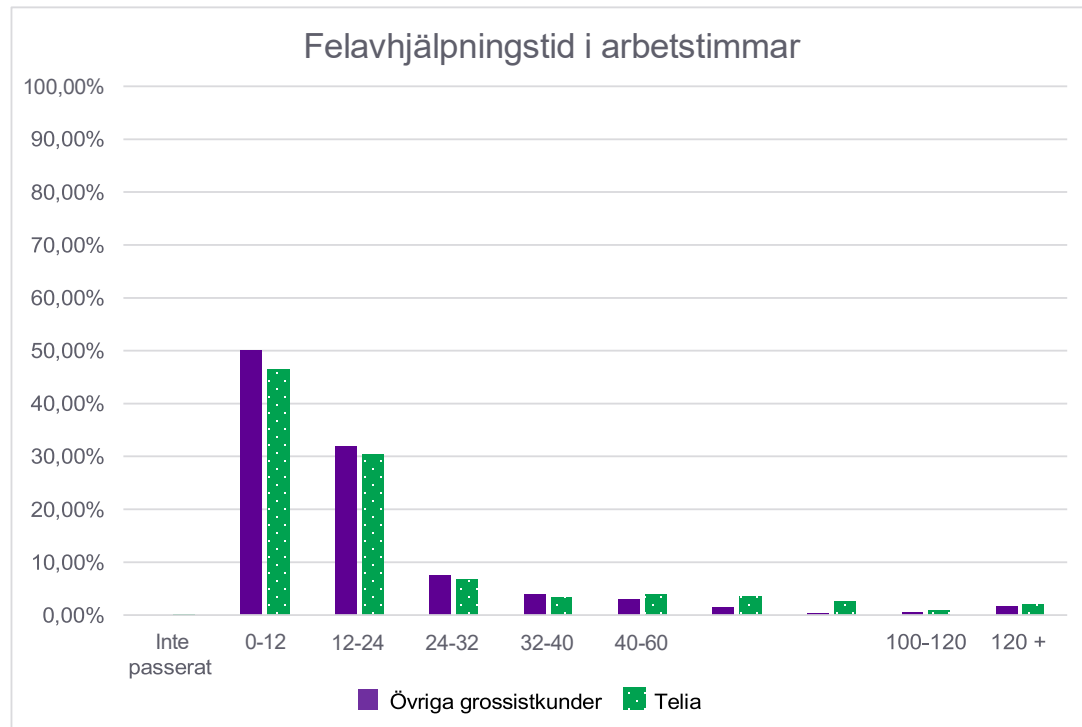
Kvartal	Övriga grossistkunder	Telia
2025Q2	87,35%	84,07%
2025Q3	78,45%	73,51%
2025Q4	82,03%	77,21%
2026Q1	79,71%	83,75%

## Fiber Villa Felavhjälpningstid under period: 2026Q1



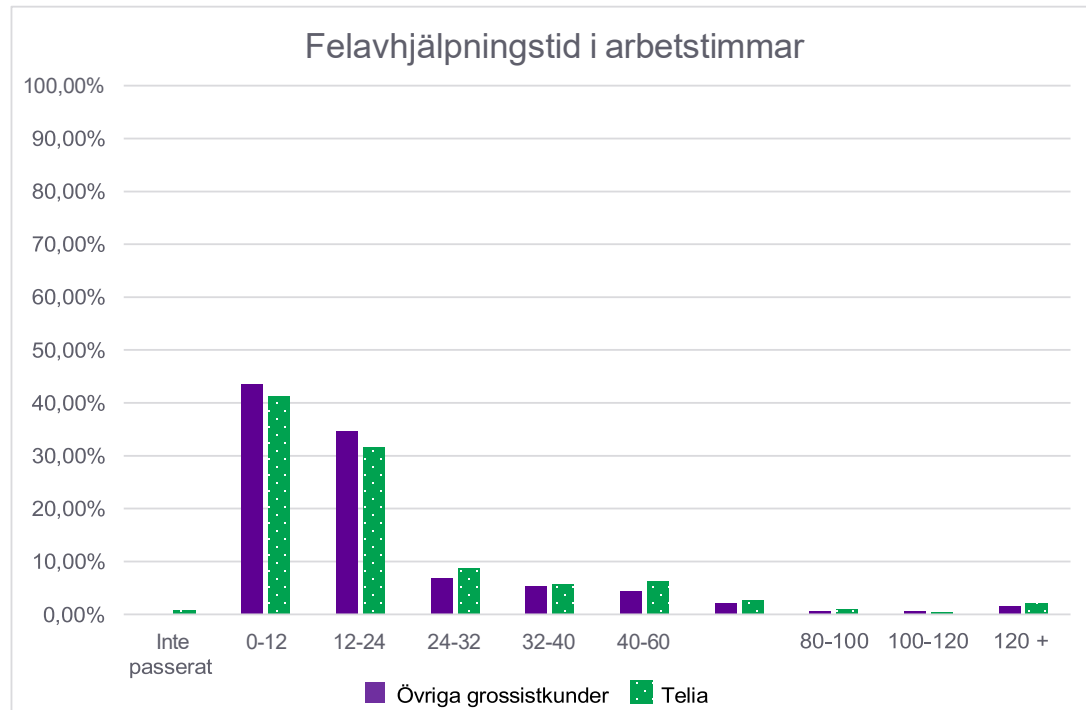
	Övriga grossistkunder	Telia
Inte passerat		0,76%
0-12	45,19%	51,71%
12-24	34,62%	31,18%
24-32	5,77%	4,18%
32-40	1,92%	3,04%
40-60	4,81%	3,23%
60-80	0,96%	1,52%
80-100	1,44%	0,38%
100-120	0,96%	0,38%
120 +	4,33%	3,61%

## Fiber Villa Felavhjälpningstid under period: 2025Q4



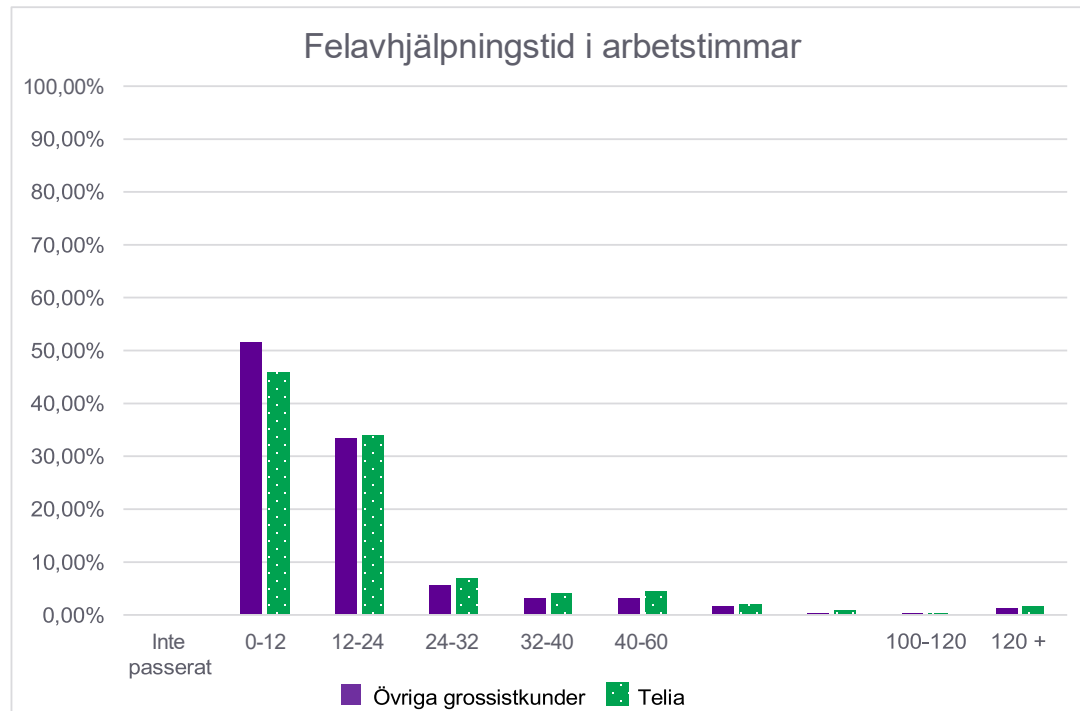
	Övriga grossistkunder	Telia
Inte passerat		0,16%
0-12	50,08%	46,47%
12-24	31,88%	30,35%
24-32	7,47%	6,70%
32-40	3,89%	3,43%
40-60	2,95%	3,95%
60-80	1,40%	3,53%
80-100	0,31%	2,60%
100-120	0,47%	0,83%
120 +	1,56%	1,98%

## Fiber Villa Felavhjälpningstid under period: 2025Q3



	Övriga grossistkunder	Telia
Inte passerat		0,63%
0-12	43,61%	41,24%
12-24	34,68%	31,60%
24-32	6,83%	8,71%
32-40	5,43%	5,63%
40-60	4,38%	6,15%
60-80	2,10%	2,66%
80-100	0,70%	0,99%
100-120	0,70%	0,36%
120 +	1,58%	2,03%

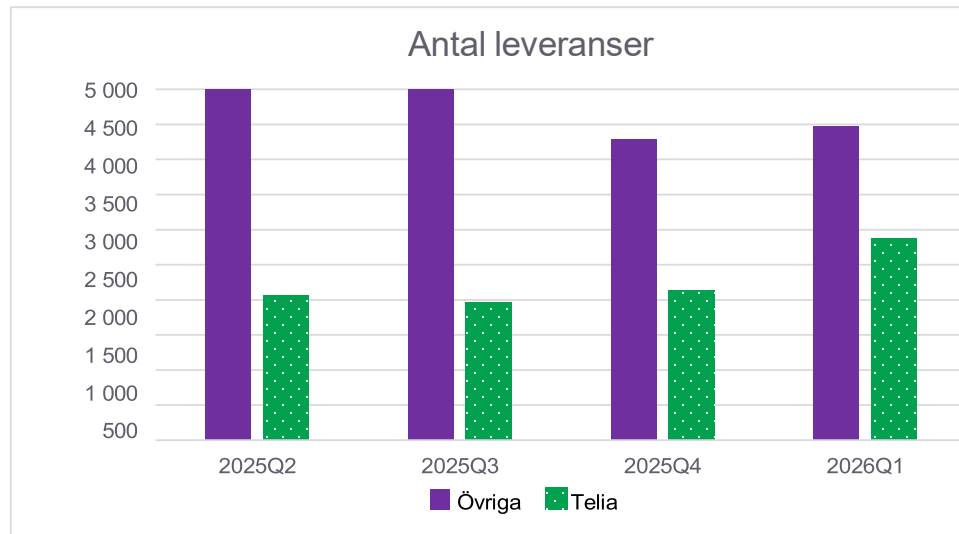
## Fiber Villa Felavhjälpningstid under period: 2025Q2



	Övriga grossistkunder	Telia
Inte passerat		
0-12	51,43%	45,80%
12-24	33,37%	33,85%
24-32	5,51%	6,88%
32-40	3,11%	4,03%
40-60	3,08%	4,42%
60-80	1,63%	1,93%
80-100	0,33%	0,78%
100-120	0,38%	0,31%
120 +	1,18%	1,67%

## Fiber Villa Antal leveranser, kundklara order

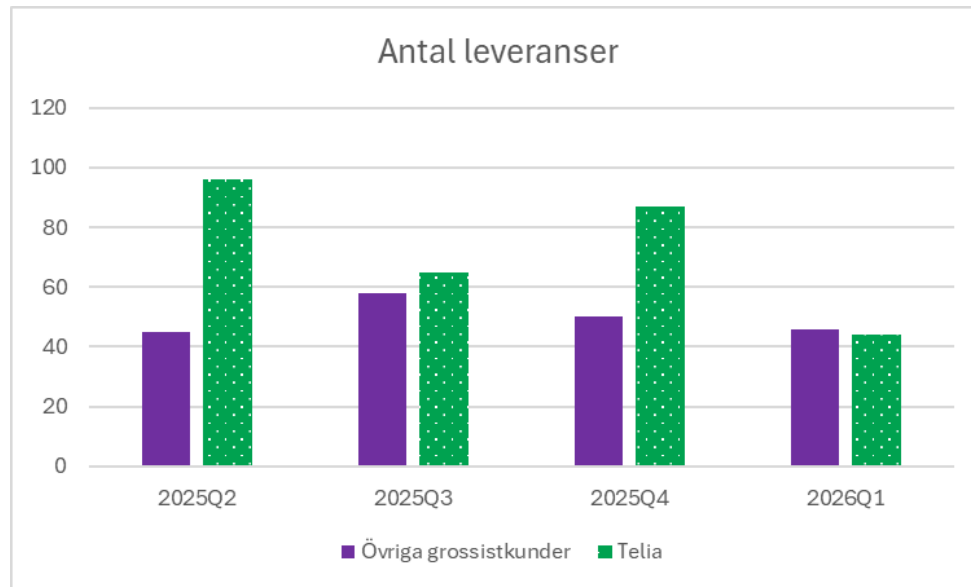
### Operatörsbyte



Kvartal	Övriga grossistkunder	Telia	Summa
2025Q2	5455	2060	7515
2025Q3	5159	1957	7116
2025Q4	4287	2133	6420
2026Q1	4478	2877	7355

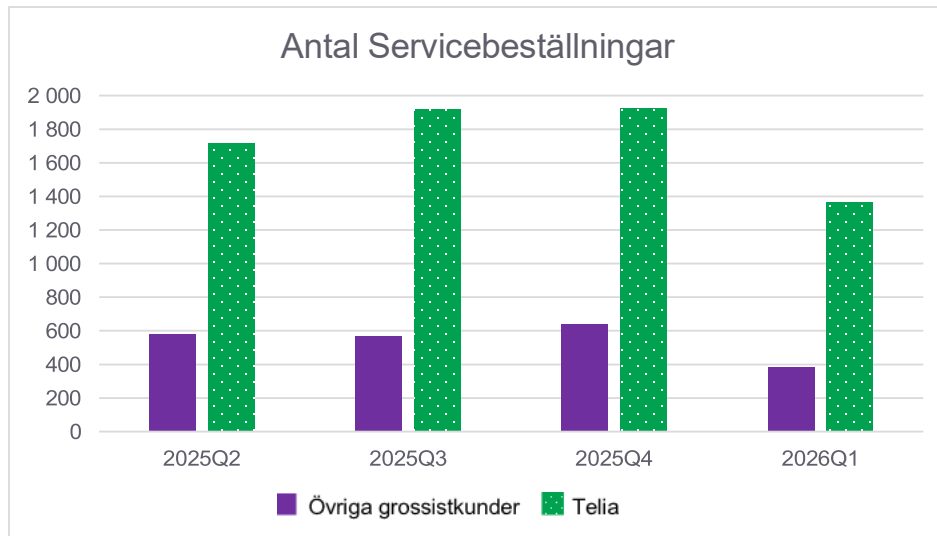
## Fiber Villa Antal leveranser, kundklara order

### Uppsättning



Kvartal	Övriga grossistkunder	Telia	Summa
2025Q2	45	96	141
2025Q3	58	65	123
2025Q4	50	87	137
2026Q1	46	44	90

## Fiber Villa antal servicebeställningar



Kvartal	Övriga grossistkunder	Telia	Summa
2025Q2	578	1 716	2 294
2025Q3	571	1 918	2 489
2025Q4	643	1 924	2 567
2026Q1	382	1 362	1 744