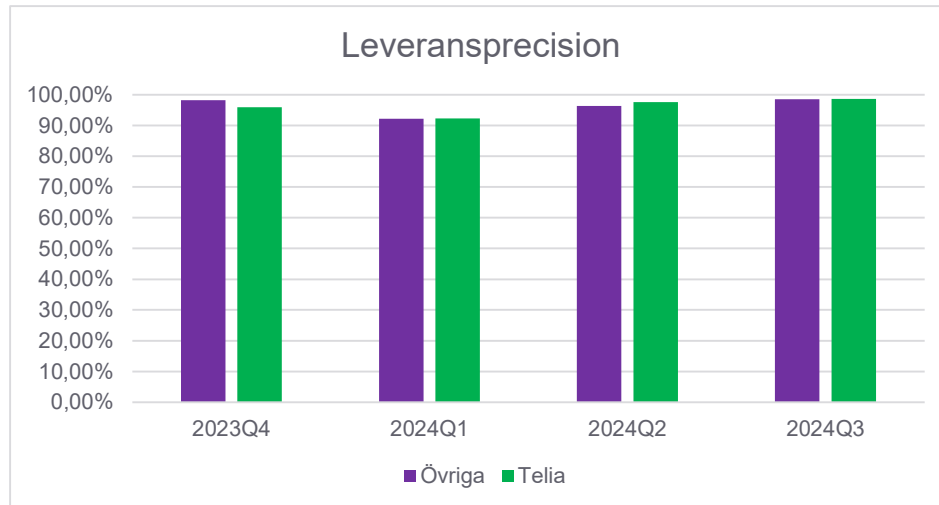


Fiber Villa Leveransprecision, kundklara order

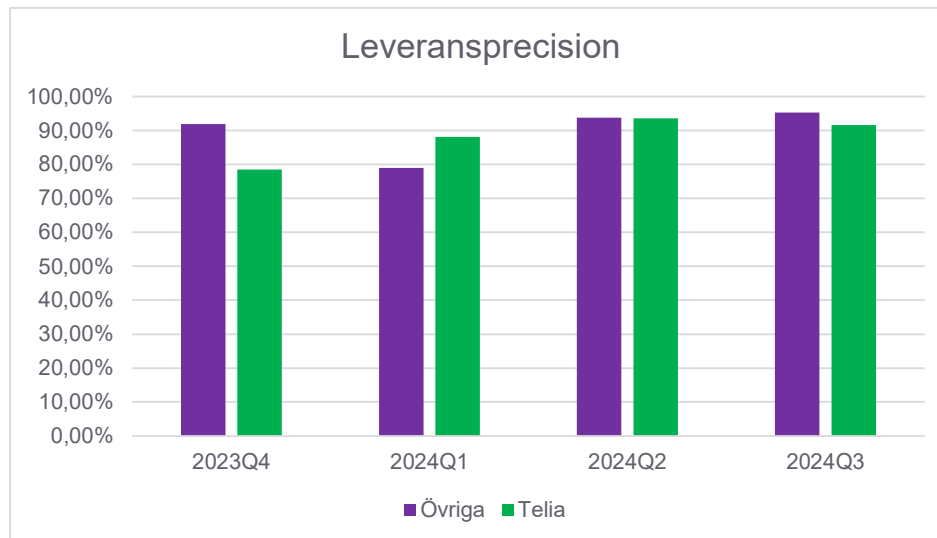
Operatörsbyte



Kvartal	Övriga grossistkunder	Telia	Summa
2023Q4	98,18%	95,96%	98,00%
2024Q1	92,08%	92,22%	92,15%
2024Q2	96,33%	97,54%	96,94%
2024Q3	98,57%	98,61%	98,59%

Fiber Villa Leveransprecision, kundklara order

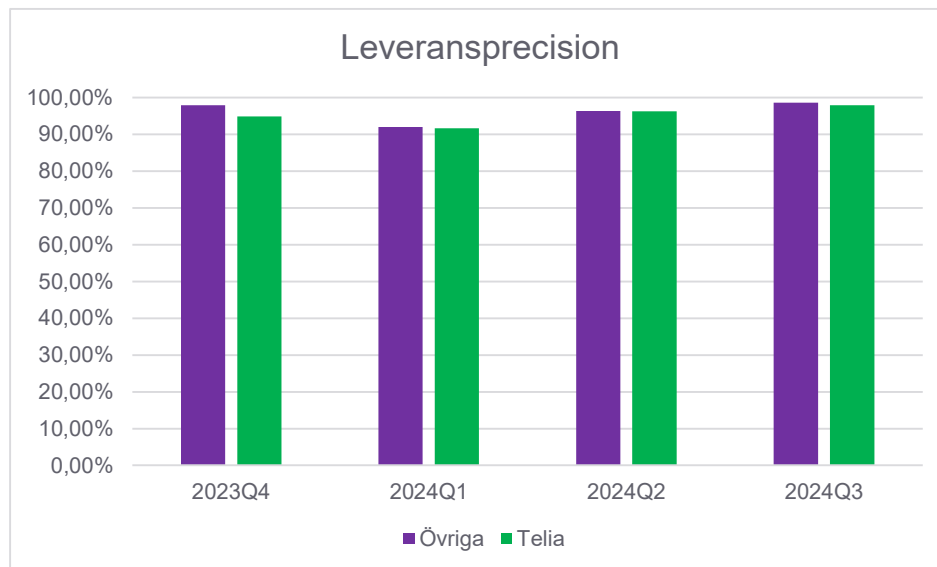
Uppsättning



Kvartal	Övriga grossistkunder	Telia	Summa
2023Q4	91,84%	78,52%	80,66%
2024Q1	78,95%	88,07%	83,76%
2024Q2	93,75%	93,49%	93,62%
2024Q3	95,24%	91,62%	93,46%

Fiber Villa Leveransprecision, Ny + Opbyte, kundklara order

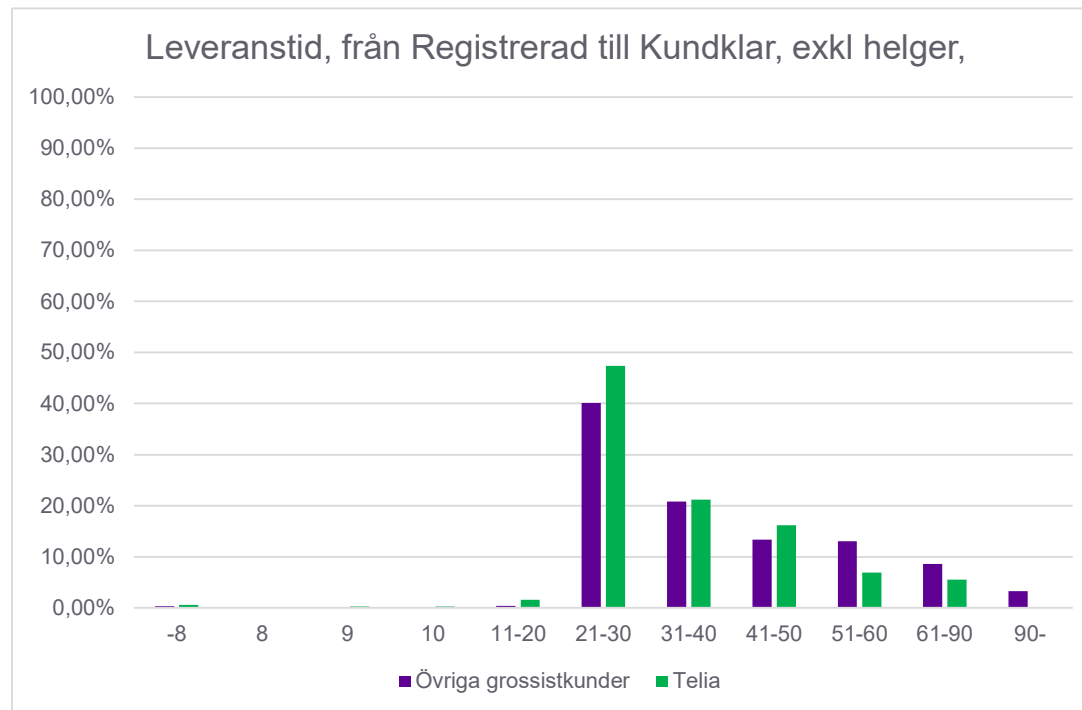
Operatörsbyte



Kvartal	Övriga grossistkunder	Telia	Summa
2023Q4	97,86%	94,77%	97,37%
2024Q1	92,02%	91,63%	91,83%
2024Q2	96,32%	96,20%	96,26%
2024Q3	98,55%	97,92%	98,14%

Fiber Villa leverans ledtid exkl. helger, kundklara order under period: 2024Q3

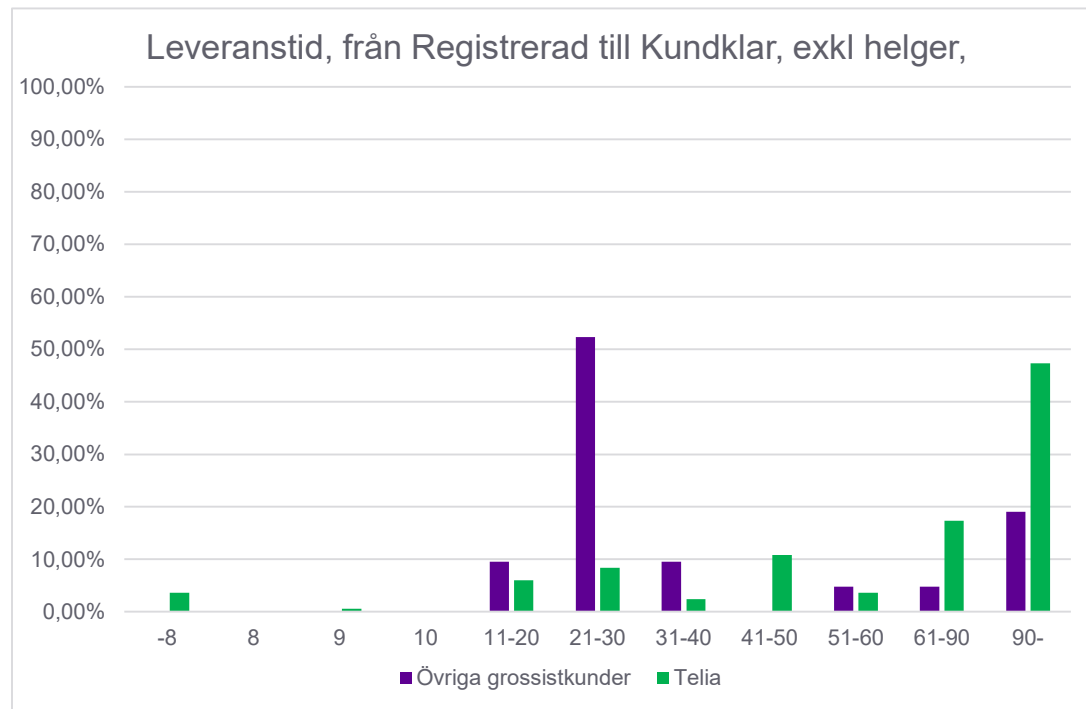
Operatörsbyte



	Övriga grossistkunder	Telia
-8	0,28%	0,59%
8		0,07%
9	0,02%	0,26%
10	0,08%	0,26%
11-20	0,39%	1,58%
21-30	40,12%	47,39%
31-40	20,83%	21,19%
41-50	13,34%	16,17%
51-60	13,03%	6,86%
61-90	8,61%	5,54%
90-	3,32%	0,07%

Fiber Villa leverans ledtid exkl. helger, kundklara order under period: 2024Q3

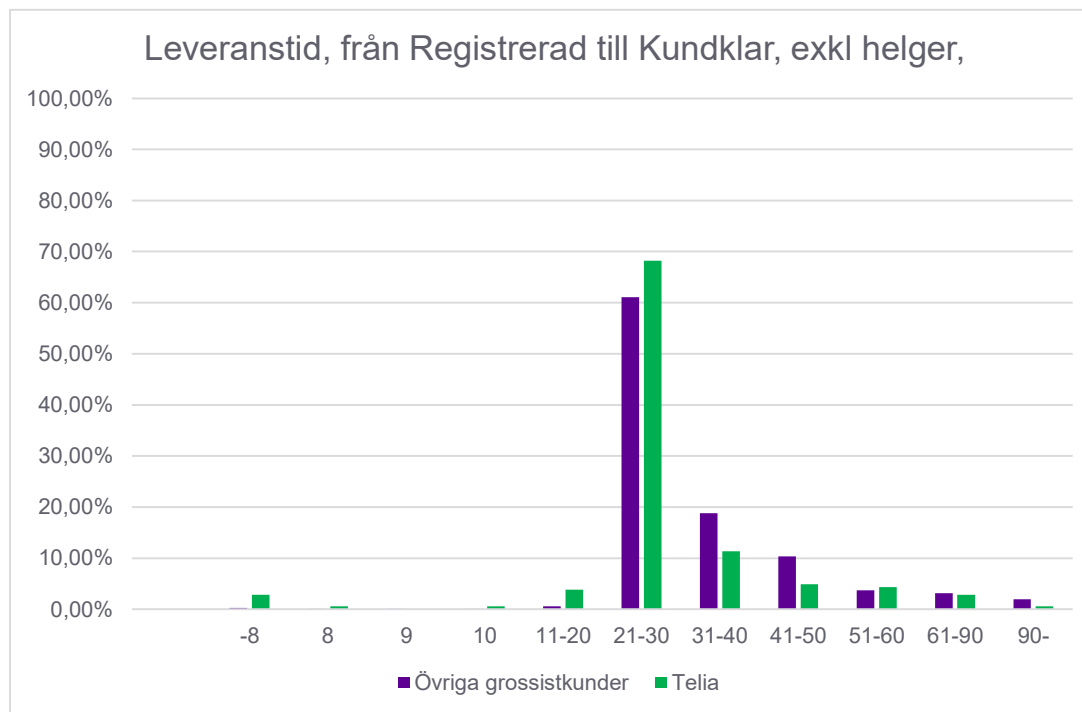
Uppsättning



	Övriga grossistkunder	Telia
-8		3,59%
8		0,60%
9		0,00%
10		0,00%
11-20	9,52%	5,99%
21-30	52,38%	8,38%
31-40	9,52%	2,40%
41-50		10,78%
51-60	4,76%	3,59%
61-90	4,76%	17,37%
90-	19,05%	47,31%

Fiber Villa leverans ledtid exkl. helger, kundklara order under period: 2023Q2

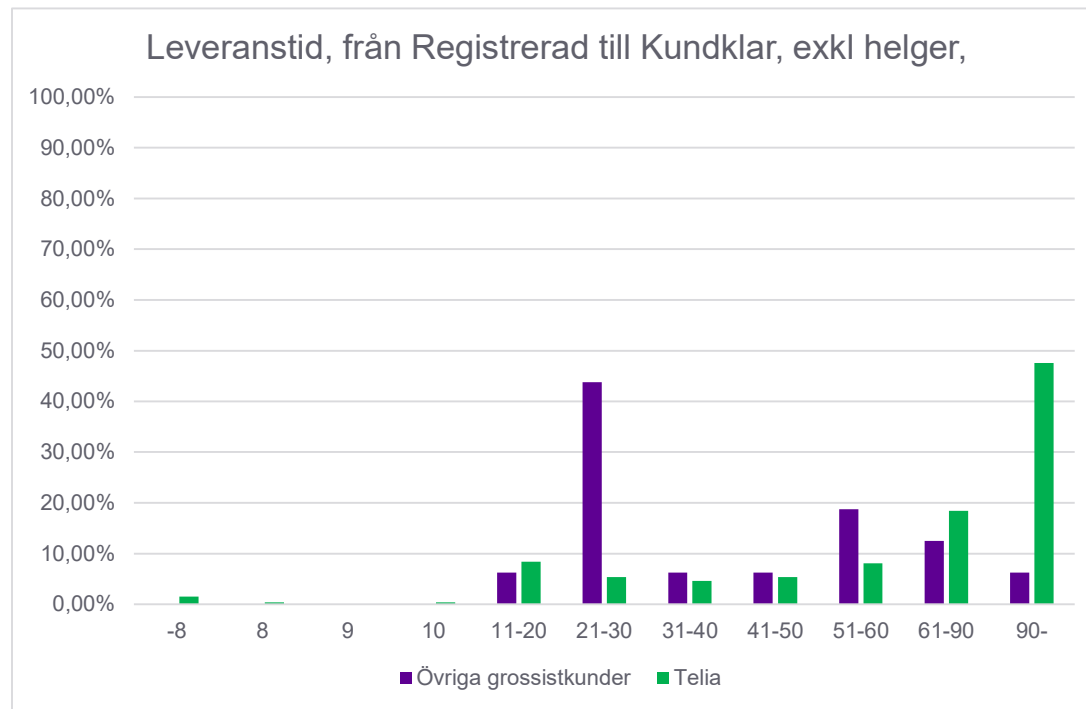
Operatörsbyte



	Övriga grossistkunder	Telia
-8	0,26%	2,84%
8	0,04%	0,57%
9	0,04%	
10	0,02%	0,57%
11-20	0,56%	3,78%
21-30	61,07%	68,24%
31-40	18,81%	11,34%
41-50	10,39%	4,91%
51-60	3,67%	4,35%
61-90	3,16%	2,84%
90-	1,99%	0,57%

Fiber Villa leverans ledtid exkl. helger, kundklara order under period: 2024Q2

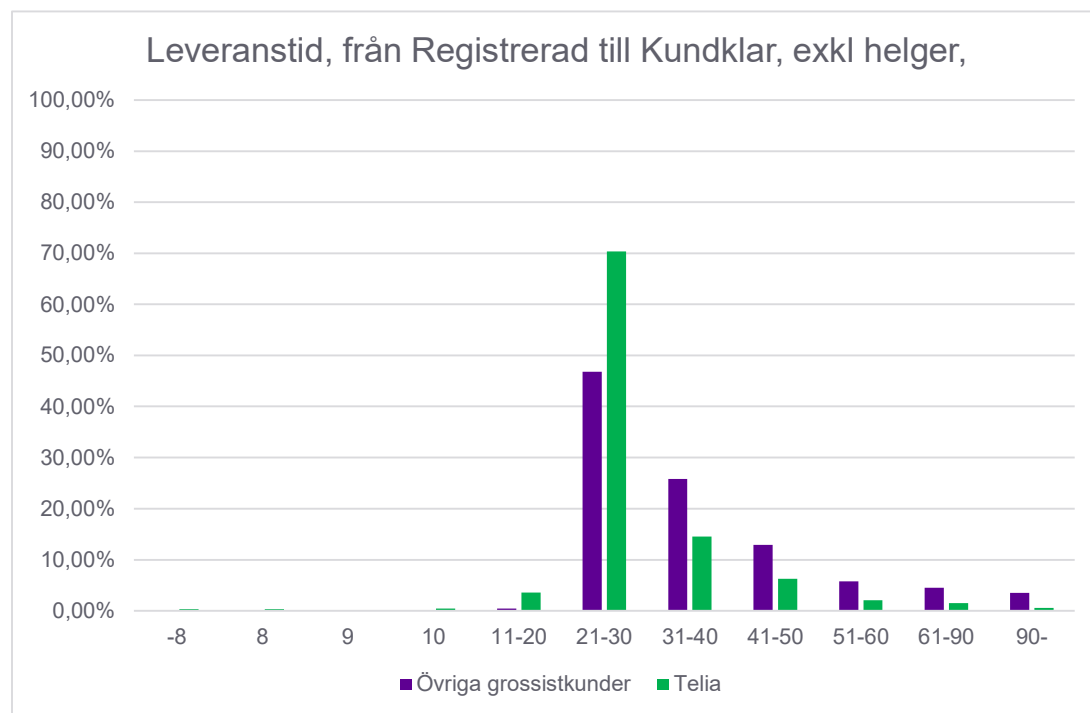
Uppsättning



	Övriga grossistkunder	Telia
-8		1,53%
8		0,38%
9		
10		0,38%
11-20	6,25%	8,43%
21-30	43,75%	5,36%
31-40	6,25%	4,60%
41-50	6,25%	5,36%
51-60	18,75%	8,05%
61-90	12,50%	18,39%
90-	6,25%	47,51%

Fiber Villa leverans ledtid exkl. helger, kundklara order under period: 2024Q1

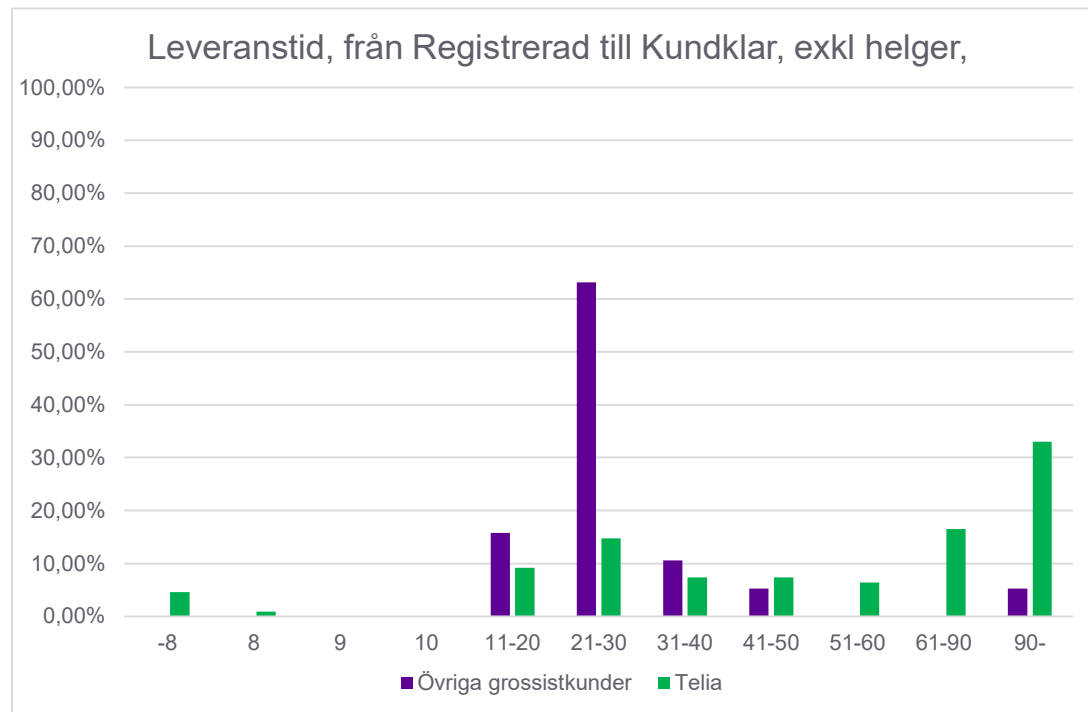
Operatörsbyte



	Övriga grossistkunder	Telia
-8	0,08%	0,30%
8		0,30%
9		
10	0,03%	0,45%
11-20	0,40%	3,59%
21-30	46,84%	70,36%
31-40	25,86%	14,52%
41-50	12,96%	6,29%
51-60	5,76%	2,10%
61-90	4,54%	1,50%
90-	3,53%	0,60%

Fiber Villa leverans ledtid exkl. helger, kundklara order under period: 2024Q1

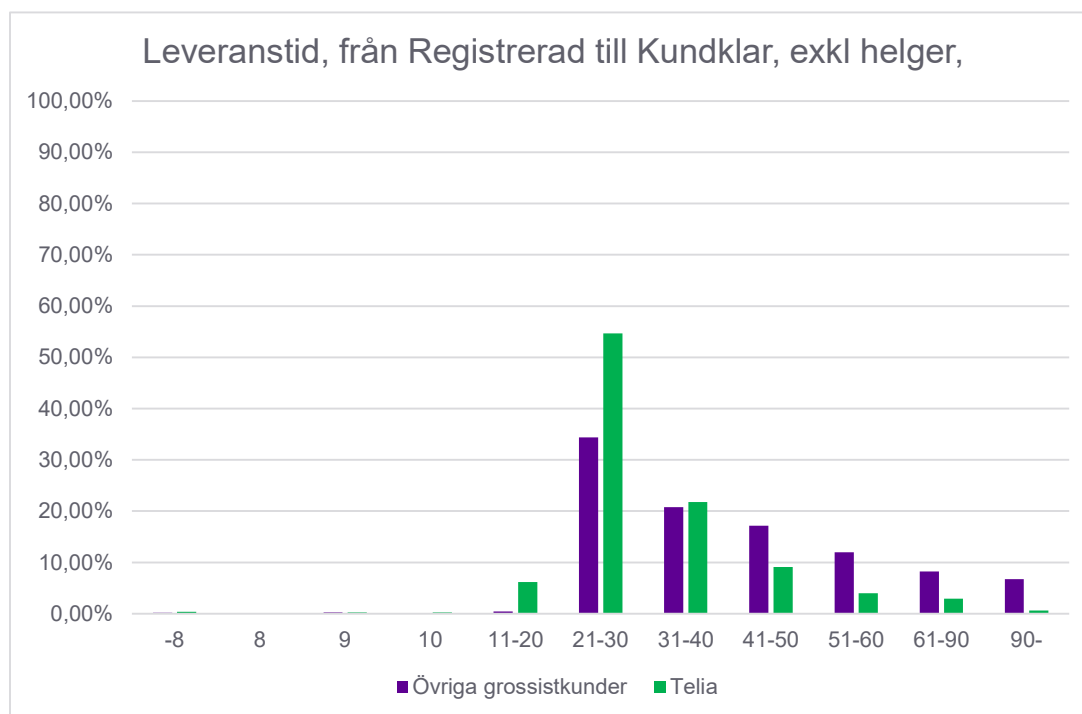
Uppsättning



	Övriga grossistkunder	Telia
-8		4,59%
8		0,92%
9		
10		
11-20	15,79%	9,17%
21-30	63,16%	14,68%
31-40	10,53%	7,34%
41-50	5,26%	7,34%
51-60		6,42%
61-90		16,51%
90-	5,26%	33,03%

Fiber Villa leverans ledtid exkl. helger, kundklara order under period: 2023Q4

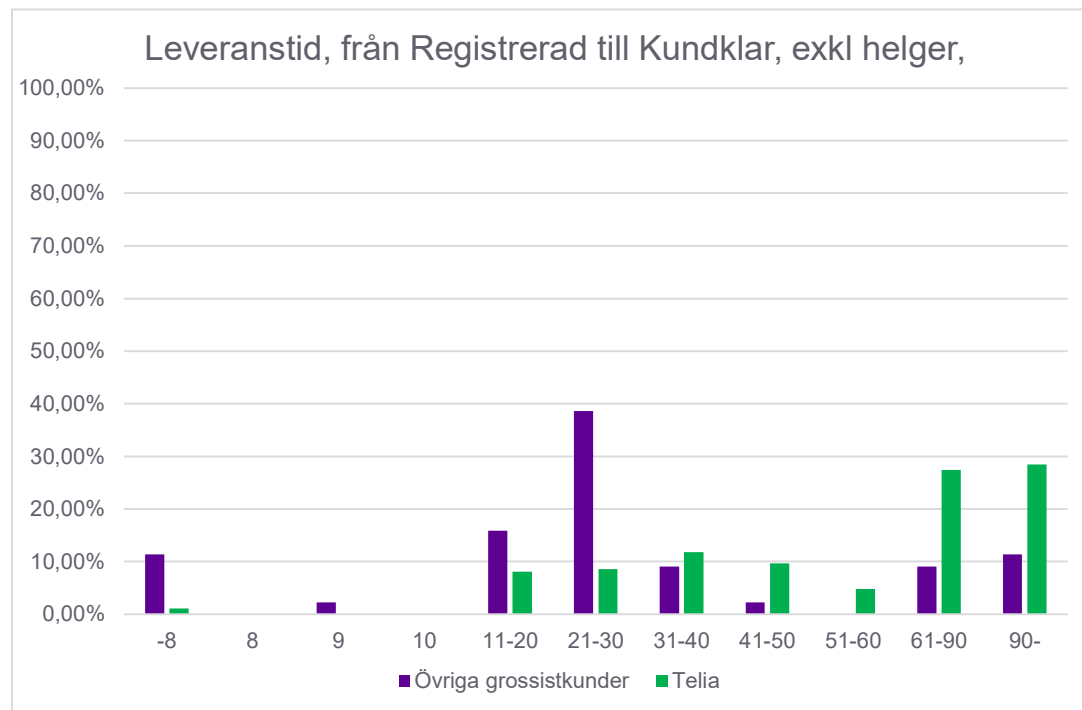
Operatörsbyte



	Övriga grossistkunder	Telia
-8	0,17%	0,41%
8	0,03%	
9	0,20%	0,21%
10		0,21%
11-20	0,43%	6,21%
21-30	34,37%	54,66%
31-40	20,76%	21,74%
41-50	17,17%	9,11%
51-60	11,99%	3,93%
61-90	8,17%	2,90%
90-	6,72%	0,62%

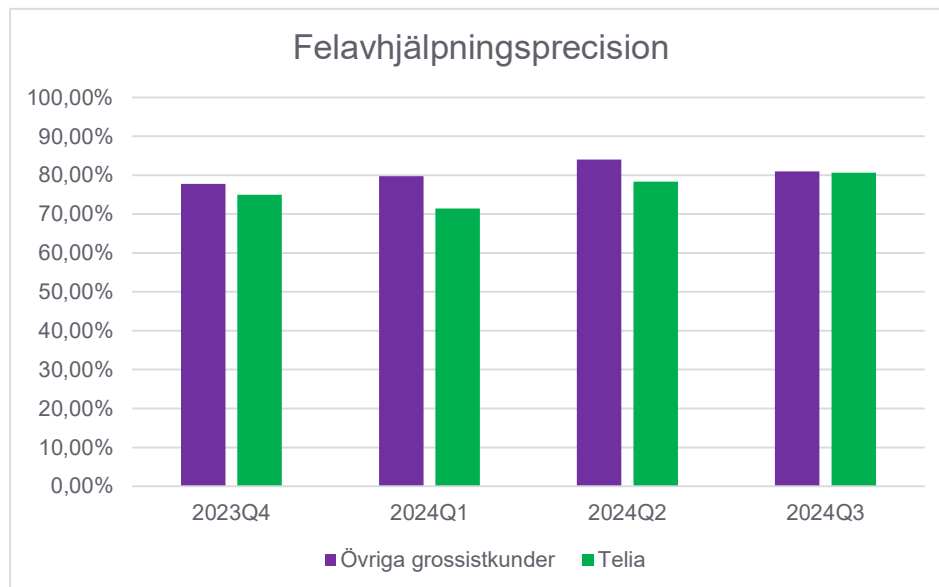
Fiber Villa leverans ledtid exkl. helger, kundklara order under period: 2023Q4

Uppsättning



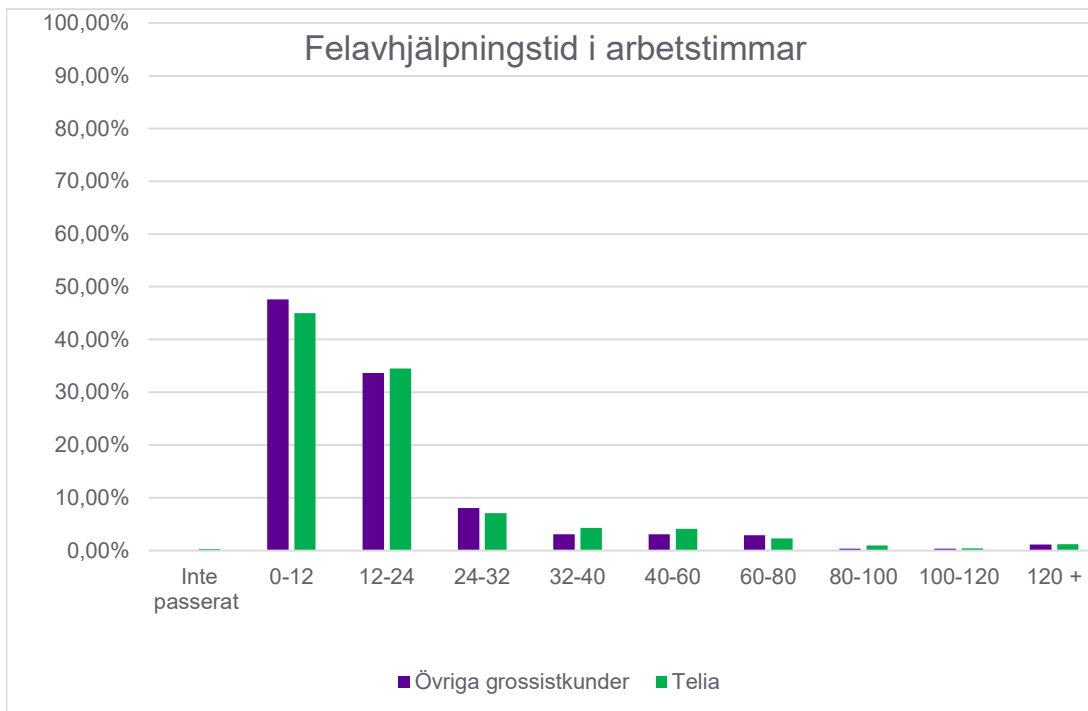
	Övriga grossistkunder	Telia
-8	11,36%	1,08%
8		
9	2,27%	
10		
11-20	15,91%	8,06%
21-30	38,64%	8,60%
31-40	9,09%	11,83%
41-50	2,27%	9,68%
51-60		4,84%
61-90	9,09%	27,42%
90-	11,36%	28,49%

Fiber Villa Felavhjäpningsprecision



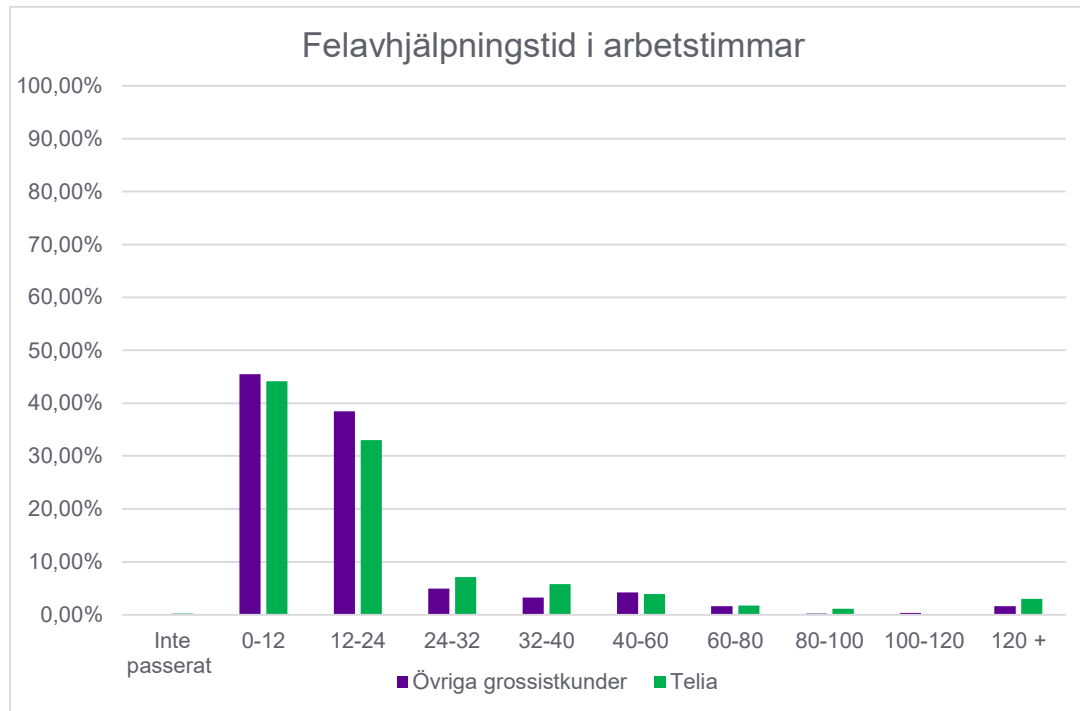
Kvartal	Övriga grossistkunder	Telia
2023Q4	77,81%	75,00%
2024Q1	79,79%	71,46%
2024Q2	84,00%	78,34%
2024Q3	81,01%	80,67%

Fiber Villa Felavhjälpningstid under period: 2024Q3



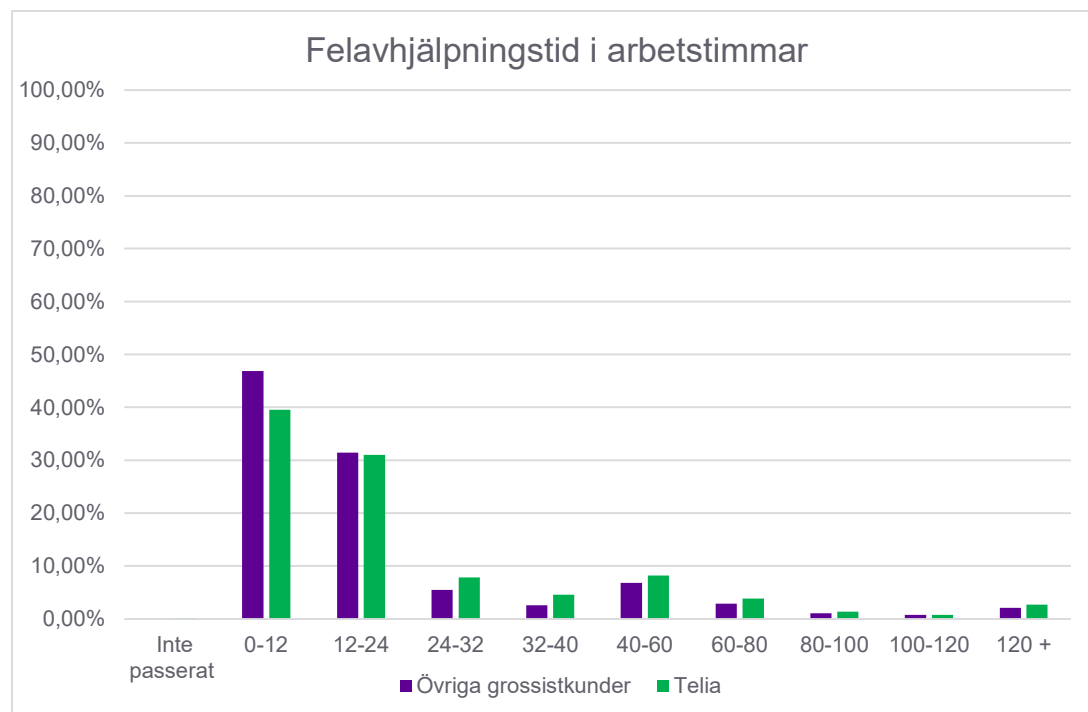
	Övriga grossistkunder	Telia
Inte passerat		0,29%
0-12	47,60%	44,97%
12-24	33,65%	34,50%
24-32	8,01%	7,08%
32-40	3,04%	4,27%
40-60	3,04%	4,09%
60-80	2,88%	2,28%
80-100	0,32%	0,94%
100-120	0,32%	0,41%
120 +	1,12%	1,17%

Fiber Villa Felavhjälpningstid under period: 2024Q2



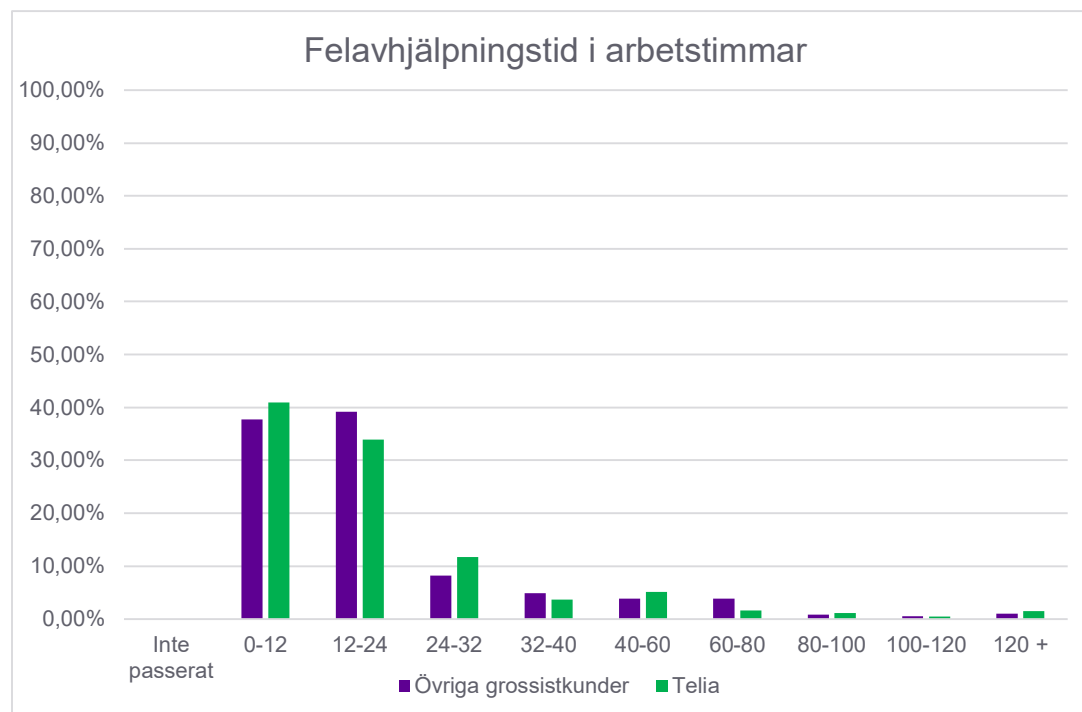
	Övriga grossistkunder	Telia
Inte passerat		0,21%
0-12	45,47%	44,17%
12-24	38,41%	33,01%
24-32	4,89%	7,09%
32-40	3,26%	5,76%
40-60	4,17%	3,93%
60-80	1,63%	1,76%
80-100	0,18%	1,12%
100-120	0,36%	0,00%
120 +	1,63%	2,95%

Fiber Villa Felavhjälpningstid under period: 2024Q1



	Övriga grossistkunder	Telia
Inte passerat	0,15%	0,15%
0-12	46,86%	39,57%
12-24	31,41%	30,98%
24-32	5,50%	7,86%
32-40	2,62%	4,55%
40-60	6,81%	8,22%
60-80	2,88%	3,82%
80-100	1,05%	1,40%
100-120	0,79%	0,73%
120 +	2,09%	2,72%

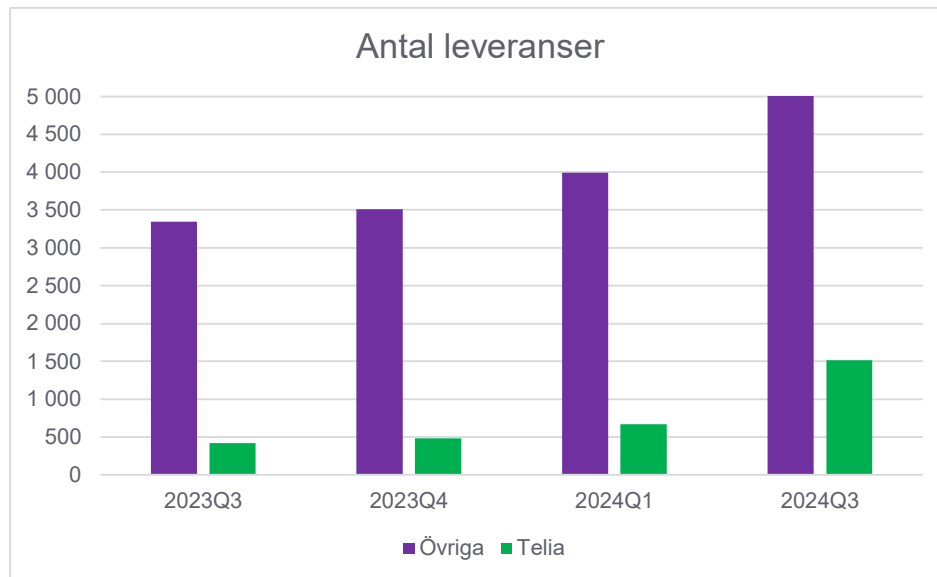
Fiber Villa Felavhjälpningstid under period: 2023Q4



	Övriga grossistkunder	Telia
Inte passerat		
0-12	37,69%	40,93%
12-24	39,23%	33,93%
24-32	8,21%	11,70%
32-40	4,87%	3,64%
40-60	3,85%	5,15%
60-80	3,85%	1,62%
80-100	0,77%	1,12%
100-120	0,51%	0,45%
120 +	1,03%	1,46%

Fiber Villa Antal leveranser, kundklara order

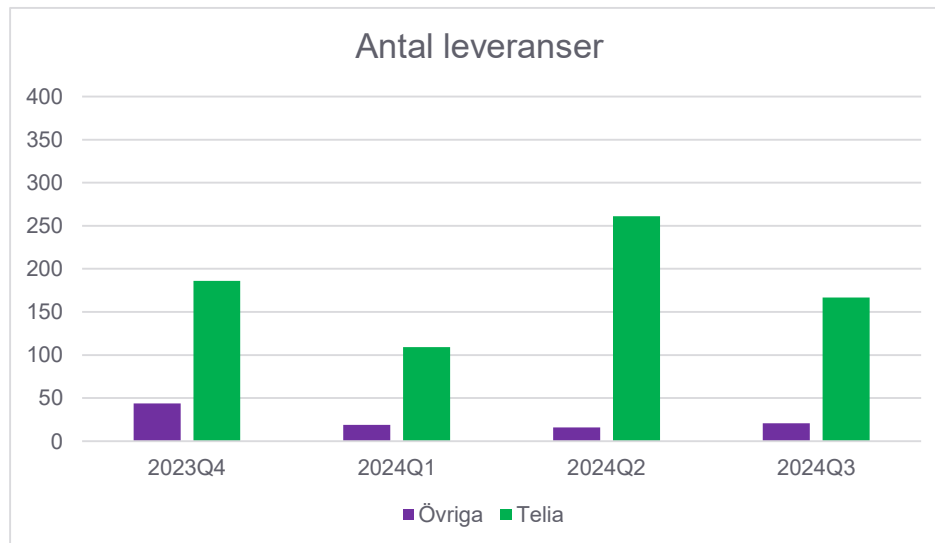
Operatörsbyte



Kvartal	Övriga grossistkunder	Telia	Summa
2023Q3	3346	421	3767
2023Q4	3512	483	3995
2024Q1	3990	668	4658
2024Q3	5035	1515	6550

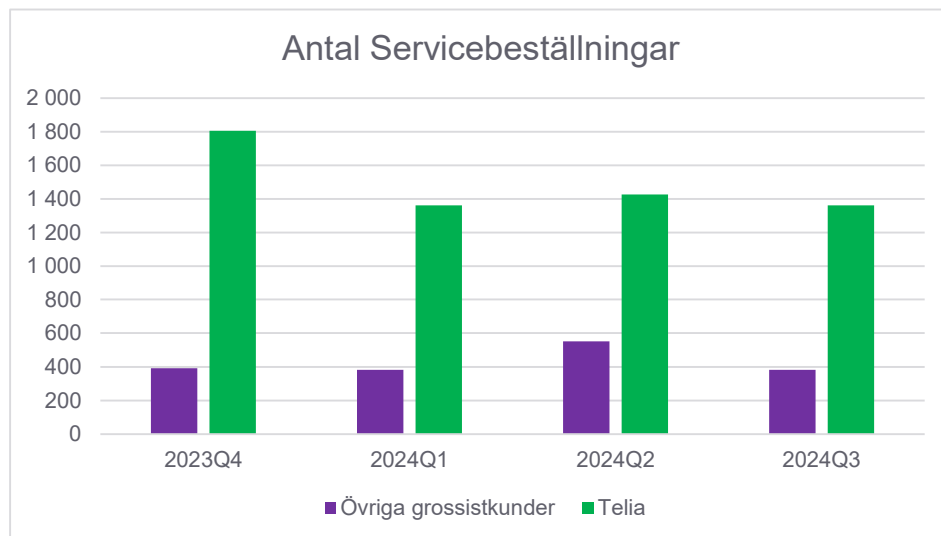
Fiber Villa Antal leveranser, kundklara order

Uppsättning



Kvartal	Övriga grossistkunder	Telia	Summa
2023Q4	44	186	230
2024Q1	19	109	128
2024Q2	16	261	277
2024Q3	21	167	188

Fiber Villa antal servicebeställningar



Kvartal	Övriga grossistkunder	Telia	Summa
2023Q4	392	1 804	2 196
2024Q1	382	1 362	1 744
2024Q2	552	1 426	1 978
2024Q3	382	1 362	1 744